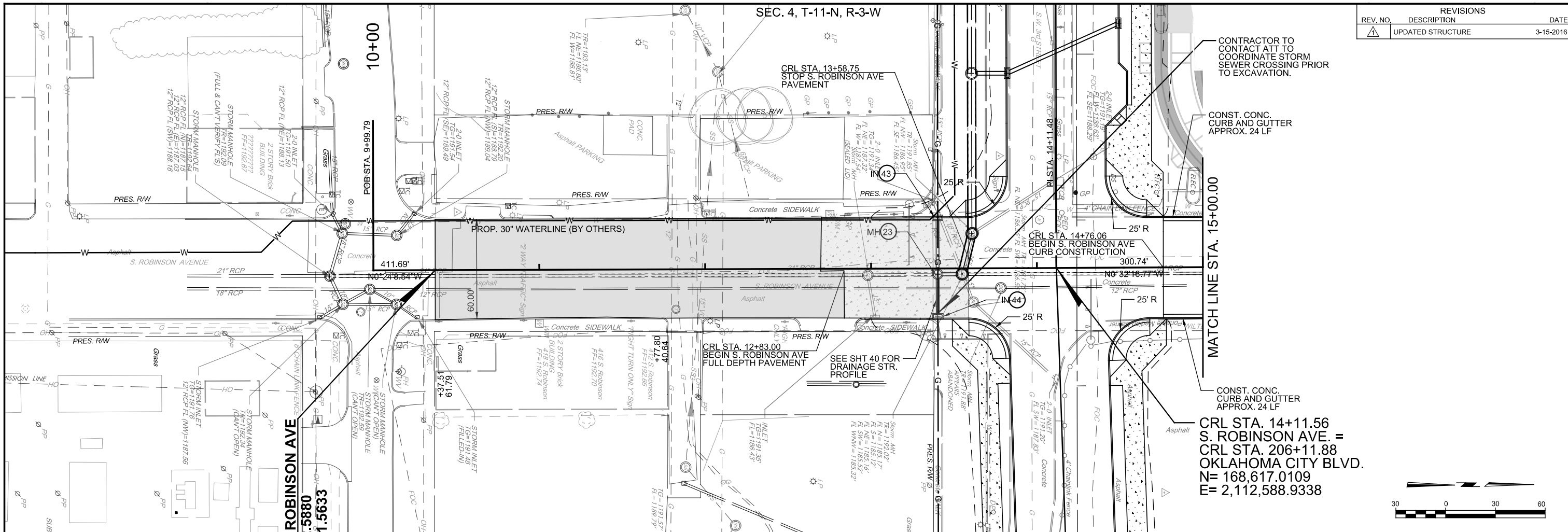


REV. NO.	DESCRIPTION	DATE
1	UPDATED STRUCTURE	3-15-2016

SEC. 4, T-11-N, R-3-W



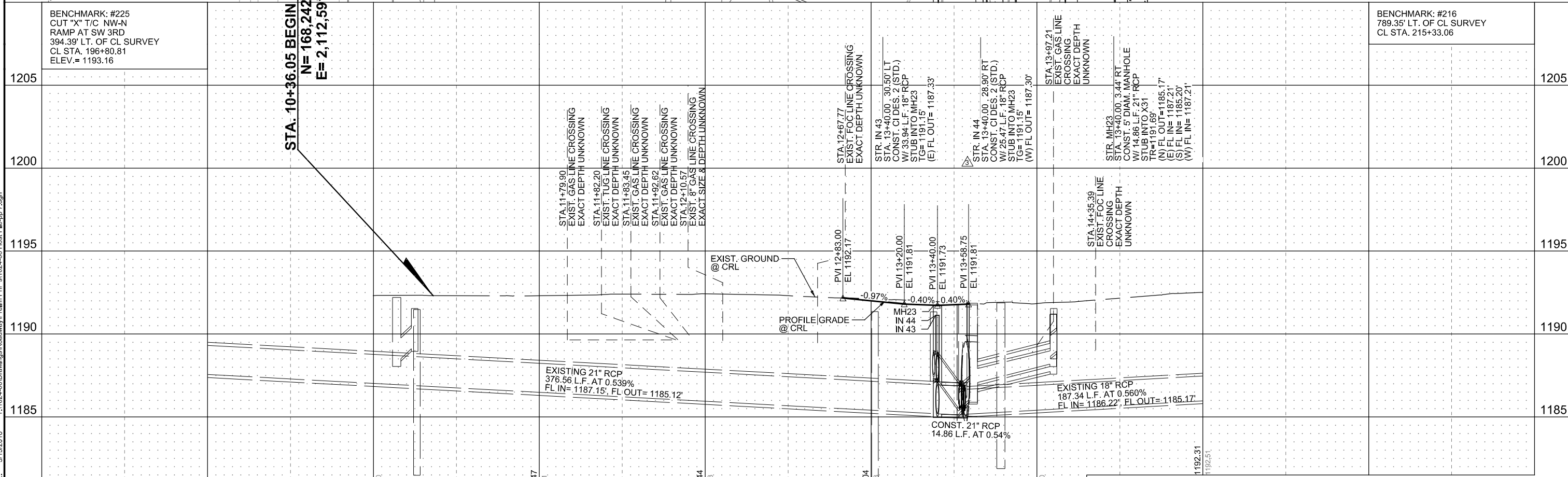
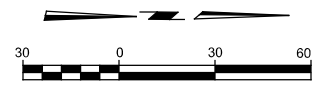
CONTRACTOR TO CONTACT ATT TO COORDINATE STORM SEWER CROSSING PRIOR TO EXCAVATION.

CONST. CONC. CURB AND GUTTER APPROX. 24 LF

MATCH LINE STA: 15+00.00

CONST. CONC. CURB AND GUTTER APPROX. 24 LF

CRL STA. 14+11.56
S. ROBINSON AVE. =
CRL STA. 206+11.88
OKLAHOMA CITY BLVD.
N= 168,617.0109
E= 2,112,588.9338



BENCHMARK: #225
CUT "X" T/C NW-N
RAMP AT SW 3RD
394.39' LT. OF CL SURVEY
CL STA. 196+80.81
ELEV. = 1193.16

BENCHMARK: #216
789.35' LT. OF CL SURVEY
CL STA. 215+33.06

STA. 10+36.05 BEGIN ROBINSON AVE
N = 168,242.5880
E = 2,112,591.5633

DATE: 3/15/2016	SCALE: PLAN: 1"=30'	STATE JOB NO. 17428(89)	SHEET NO. 34
DRAWN BY: ISFM	PROFILE: VERTICAL: 1"=5'	HORIZONTAL: 1"=30'	

PRINT DATE: 3/15/2016 T:\1024-06\Drawings\Roadway\Prelim\Prn\Ps\1024-06 Host File-pp. 7.dgn

PLAN AND PROFILE - S. ROBINSON AVE. - OKLAHOMA COUNTY